



FAQ – PurpleFinder Mini-map

You can now have a mini-map version of Purplefinder with you at all times on your mobile phone (or other device) provided it has full internet access and supports Java MIDP 1.0 technology. For a full list of devices that can use the Mini-map function please go to: <http://developers.sun.com/mobility/device/device>.

You can carry out various tasks and track your vessels without having to be at your desk: Re-set an alert, poll for a position or just see where your vessels have been/ are heading. There is no extra cost from Purplefinder for this service – it will be through airtime with your mobile provider (often free!).

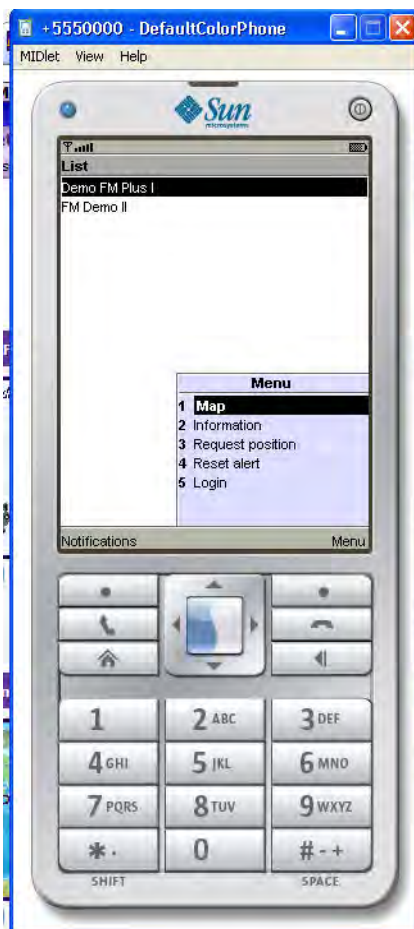
However, please be aware that there are certain menu options that appear that are not available to all customers yet if pressed will still incur a charge. For example, if the reset alert is pressed and you do not have a security package, you will still be charged for this even though no alert button was ever pressed.

Getting started

Type in <http://www.purplefinder.com/MiniMap.jad> into the address bar of the internet on your phone. Please note that the link is case sensitive and must have capital M's.

Then follow instructions to download the application to your phone. You will need your username and password. The same rules apply to extent of usage depending on level of the password. You will also be asked if it is Ok to use airtime, then you will be asked if it is Ok to use network, choose yes for both.

After logging in you will see a list of your assets. Click on the '**Menu**' in the bottom right corner, using your mobile keypad to reveal options.....



1. Map – A particular vessel on a world map, by default showing a history trail of position reports. This can be interchanged – see later - **Hide history**. This defaults to land map but can be changed to sea chart later.

2. Information – This is the information about your asset/vessel that appears on your normal web fleet map, including Vessel Name, any postings you have added, speed, heading, weather information etc.

3. Request position – This is for an instant poll to the asset/vessel. It incurs a charge and you will need to have signed in with the Master Password.

4. Reset alert – You can reset a DSAS unit that is in Alert Mode. Again you will need to be signed in with the Master Password.

5. Login – This is for logging in as another user or perhaps with a different password.

This example shows there is only one asset/vessel in this account. If there were more it would appear as a list, you can scroll down/up to highlight a particular asset/vessel and apply an action from the menu.

Fig. 2



If you select 1. **Map** you will get a map of the highlighted vessel/asset – see Fig.3 & 4 below.



Fig 3

There are two pictures displayed to illustrate the whole menu of options available:

- Information** – As above
- Request position** – As above
- Reset alert** – As above
- Zoom in** – This pans in further for a more detailed idea of where the asset/vessel is situated.
- Zoom out** – This pans out for a broader view of where the asset/vessel is in global terms.
- Home in** - This homes in on the asset in question. The home in scale is defined in your PurpleFinder web account in the Map profile associated with the particular asset.

World map – This instantly brings the view as a world map with the particular vessel

Sea chart - You can switch from Sea chart to Land chart. It is currently showing Land chart, therefore the detail is focused on land data. The sea chart is more suitable for a vessel at sea as it shows data corresponding to depth of sea and ports etc.

Hide history – This enables you to have the vessel showing without the history trail of position reports. It can be interchanged to show history again and vice versa.

Hide name – You can have the vessel showing without the name on the screen.

Refresh – You can refresh the current screen

Exit – Leave this Map function.



Fig 4



Reset an alert



Fig. 5



Fig. 6

If you choose to reset your DSAS through Mini-map, please go to **Reset alert** and select on your mobile. This will then proceed to reset the Unit and you will see the window as above-Fig. 6.

After the reset is successful the picture of the asset on your mobile Mini-map will appear as Green/Normal.

If you have any problems in loading Mini-map, or problems running through the functions, please call Customer Support on +44207 313 7400 or email support@purplefinder.com